

Please follow the below steps in order:

Step 1

Create an account on Amazon's website - www.amazon.com or www.amazon.co.uk.

Step 2

Connect the **ALEXA** Smart speaker to the power via the **USB cable**, 4 red lights will come on.

Step 3

Turn on **Bluetooth** on your Smartphone.

Step 4

Connect your Smartphone to a WiFi network (Not 3G or 4G).

Step 5

Download **ELEX SMART app** on your Smartphone via Apple App Store or Google Play.

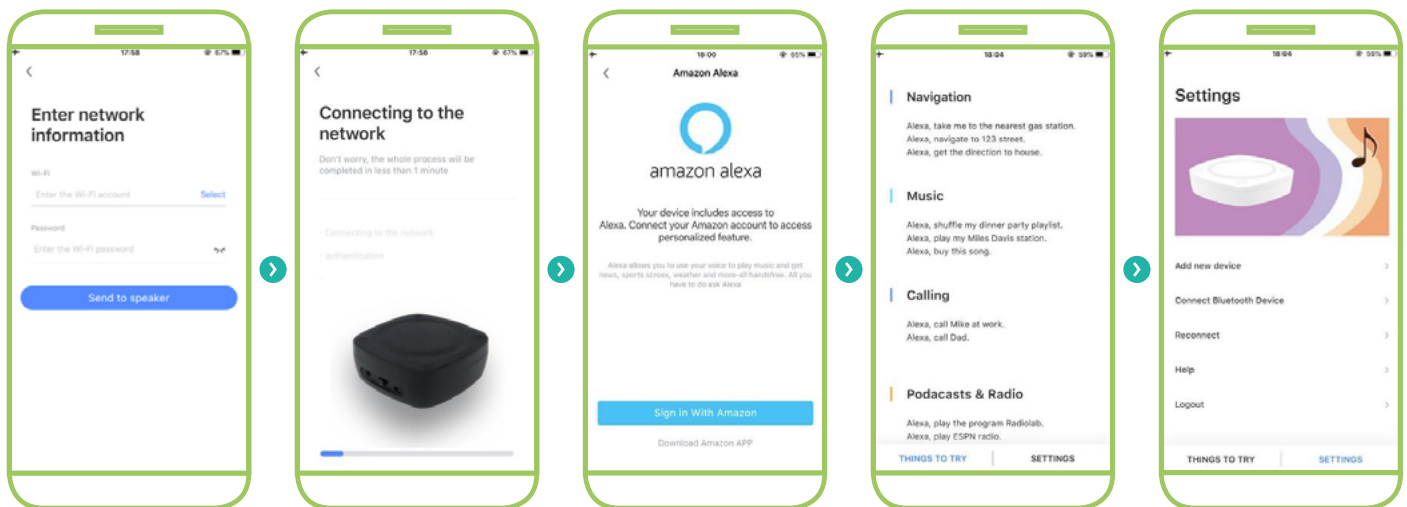


Step 6

Follow the installation instructions on your Smartphone (iPhone screenshots below).

Step 7

Once complete, the speaker will turn on 4 green dots. Use the wake word "**Alexa**" to use the device (Alexa what time is it?).



You can add other functions to your voice assistant by installing 'Skills' on your Amazon account.